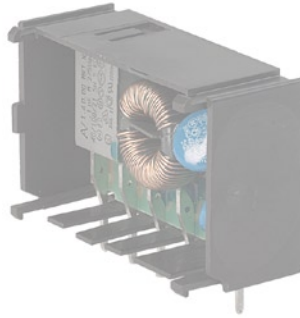


## IEC Appliance Connector C14 with Fuseholder 1- or 2-pole

Medical fuse drawer



Inlet with fuseholder (5x20 mm)

KPF Filter Module  
(not enclosed)

C14



70° C

**Description**

- Panel Mount:  
Sandwich/rear-side
- 2 Functions:  
Inlet Protection class I, Fuseholder for fuse-links 5 x 20 mm 1- or 2-pole
- For PCB mounting
- Alternative: version with line filter [KPF](#); [KPS](#)

**Approvals**

- VDE License Number: 40008635
- UL License Number: E93617
- CSA License Number: 38456

**Characteristics**

- Panel mount from rear or "sandwich" between top and bottom/side to side panels  
PCB mount with snap-in or screw-on <BREAK/> feet (self tapping screws Ø 3 x 8 mm)
- All single elements are already wired
- Fuse drawer meets requirements of medical standard IEC/EN 60601-1  
The fuse drawer can only be opened with the aid of a tool  
The fuseholder is accessible from the equipment front
- Insulation cover on the rear-side
- Qualified for use in equipment according IEC/EN 60950

**Other versions on request**

- Solder terminals
- Quick-connect terminals
- For protection class II

**Weblinks**

[Approvals](#), [RoHS](#), [CHINA-RoHS](#), [e-Store](#), [SCHURTER-Stock-Check](#), [Distributor-Stock-Check](#)

**Technical Data**

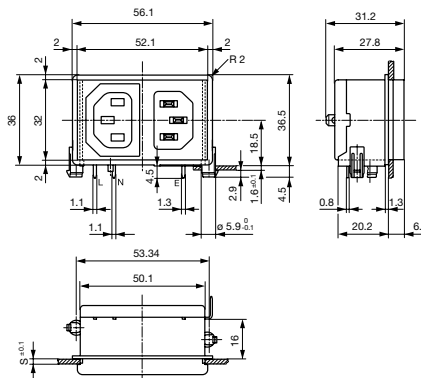
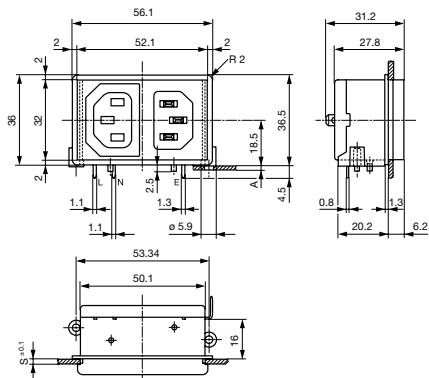
Ratings IEC	10A / 250VAC; 50Hz
Ratings UL/CSA	10A / 125VAC; 60Hz
Dielectric Strength	> 2.3kVAC between L-N > 2.8kVAC between L/N-PE (1 min/50Hz)
Allowable Operation Temp.	-25°C to 70°C
Degree of Protection	from front side IP 40 acc. to IEC 60529
Protection Class	Suitable for appliances with protection class I acc. to IEC 61140
Terminal	For PCB mounting Quick connect terminals 4.8 x 0.8 mm Solder terminal on request
Panel Thickness s	Snap-in: 1.5/2/2.5/3 mm
Material: Housing	Thermoplastic, black, UL 94V-0

Appliance-Inlet/-Outlet	C14 acc. to IEC/EN 60320-1, UL 498, CSA C22.2 no. 42 (for cold conditions) pin-temperature 70 °C, 10A, Protection class I
Fuseholder	1 or 2 pole, Shocksafe category PC2 acc. to IEC 60127-6, for fuse-links 5 x 20mm
Rated Power Acceptance @ Ta 23 °C	5 x 20: 2W (1 pole)/ 1.6W (2-pole) per pole
Power Acceptance @ Ta > 23°C	Admissible power acceptance at higher ambient temperature see derating curves

## Dimensions

Screw on PCB mounting

Length |-----| 56.1 mm  
Snap-in PCB mounting



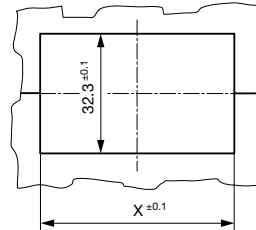
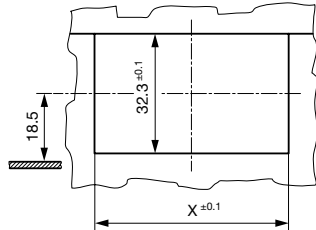
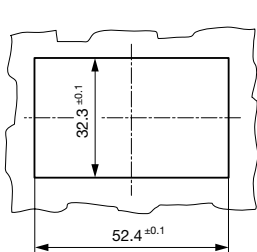
A = for PCB-thickness 1.2/1.6/2.0/2.4 mm  
Additional quick connect terminal 4.8 x 0.8 mm

Additional quick connect terminal 4.8 x 0.8 mm  
s = panel thickness

Mounting holes for backside mounting

Sandwich mounting holes

Sandwich mounting holes

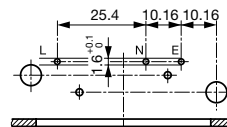
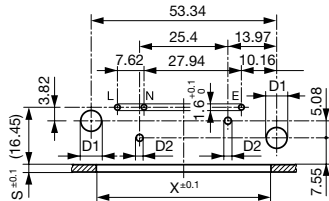


X = 48.4 at S = 1.5 and 2.5  
X = 50.4 at S = 2.0 and 3.0

X = 48.4 at S = 1.5 and 2.5  
X = 50.4 at S = 2.0 and 3.0

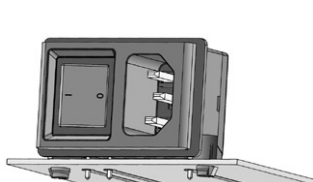
For 2-pole inlet/switch, 2-pole inlet/fuseholder and inlet/outlet

For 1-pole inlet/switch and 1-pole inlet/fuseholder  
S and X see mounting holes

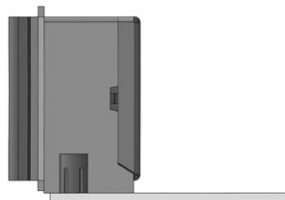


Other dimensions as for 2-poles  
d1 = 6 ± 0.05 for (snap-in)  
d1 = 3.6 (screw-on)  
d2 = 2 ± 0.1 (screw-on)  
Dimensions without tolerance:  
≤ 15 = ± 0.05; ≥ 15 = ± 0.1

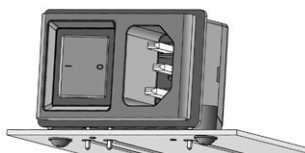
## Mounting instructions



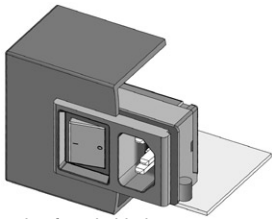
Stable snap feet requires minimal insertion force



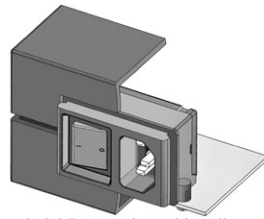
Module must lay flat on the PCB when soldering



Screw-on mount uses self-tapping screws

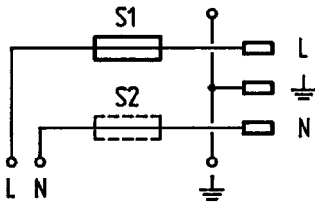


Insertion from behind



"Sandwich" mounting with split enclosure panels

Diagrams



Inlet with fuseholder (5 x 20 mm)

Variants

[Distributor-Stock-Check](#) | [SCHURTER-Stock-Check](#) | [e-Store](#)

Panel mounting	Panel Thickness s [mm]	PCB [mm]	Line Switch	Fuseholder	Appliance outlet	Order Number
Snap-in	2	1.6	-	1 pole	-	KP01.1412.01
Snap-in	2	1.6	-	2-pole	-	KP01.1312.01
Snap-in	3	1.6	-	1 pole	-	KP01.1413.01
Snap-in	3	1.6	-	2-pole	-	KP01.1313.01
Screw-on	2	1.2/1.6/2.0/2.4	-	1 pole	-	KP01.1452.01
Screw-on	2	1.2/1.6/2.0/2.4	-	2-pole	-	KP01.1352.01
Screw-on	3	1.2/1.6/2.0/2.4	-	1 pole	-	KP01.1453.01
Screw-on	3	1.2/1.6/2.0/2.4	-	2-pole	-	KP01.1353.01

Type KP without cover: KP01.XXXX.XX90

Ground Terminal with solder pin: KP01.XXXX.X3XX

**Packaging unit** 50 Pcs